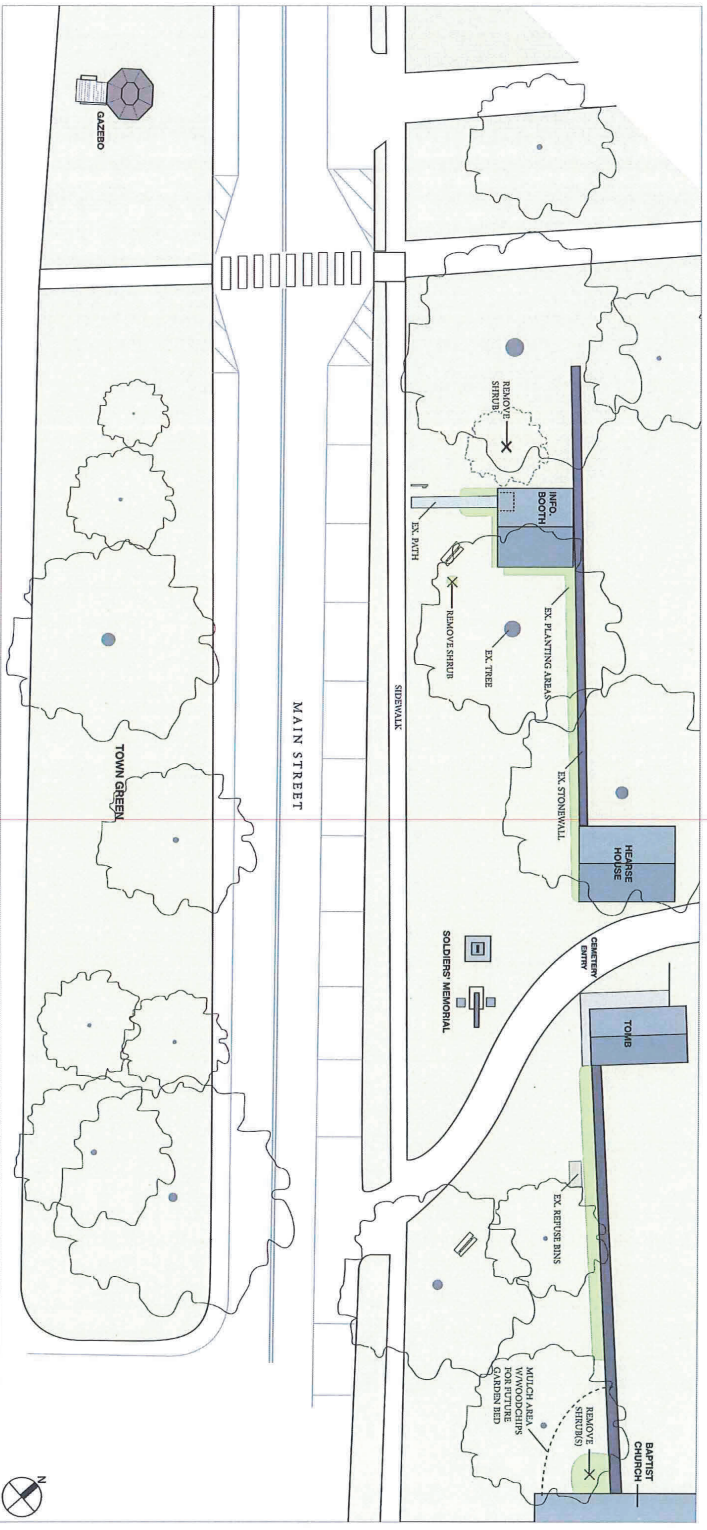


SITE PHOTOS 09-2018



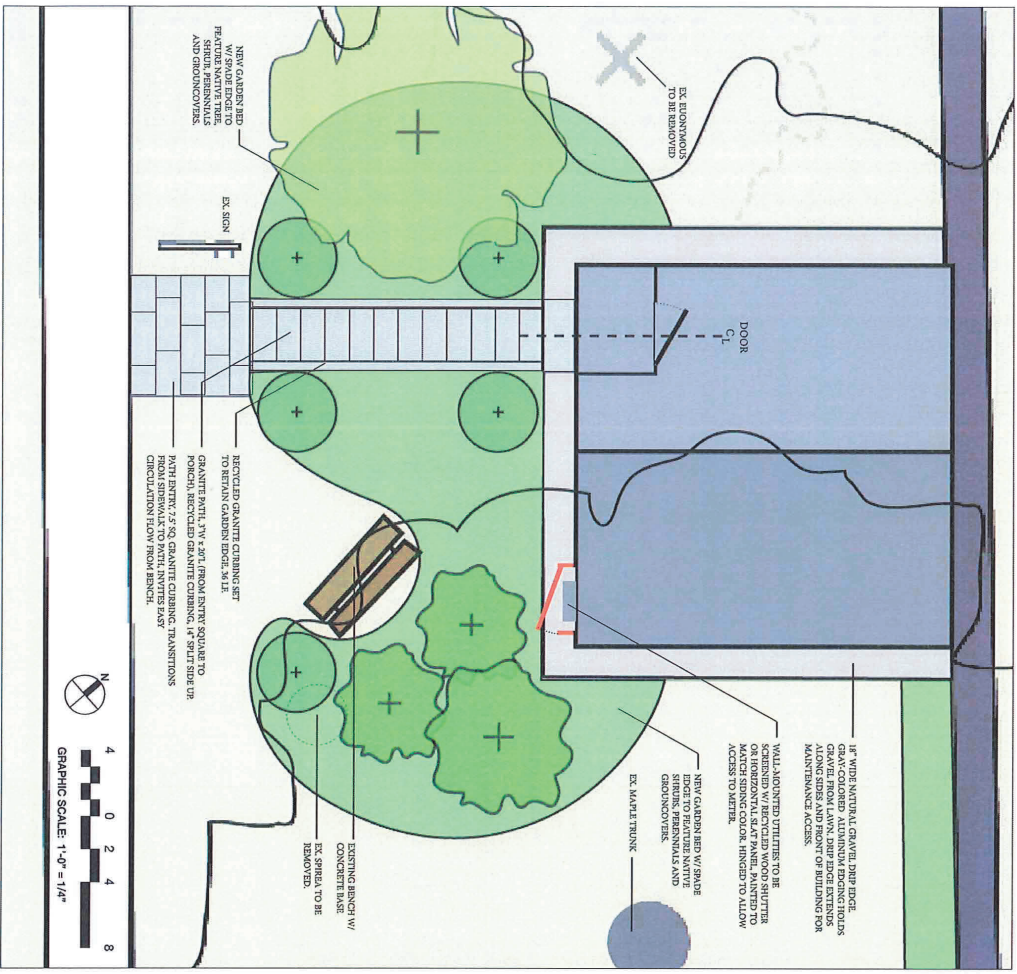
EXISTING SITE (NOT TO SCALE)

CHESTER TOWNSCAPE

Main Street, Chester, Vermont

EXISTING CONDITIONS 1

BETHANY GRACIA LANDSCAPE DESIGN  
802-289-3973



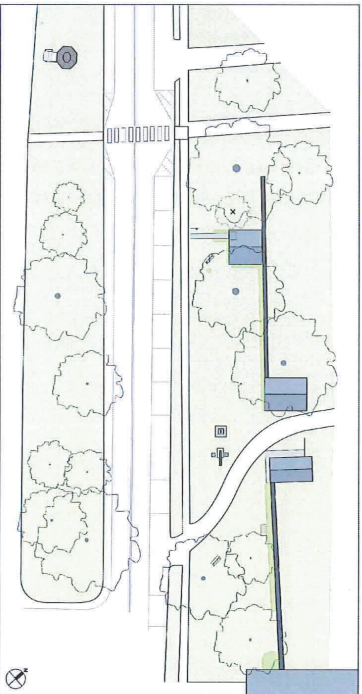
CHESTER TOWNSCAPE  
Main Street, Chester, Vermont



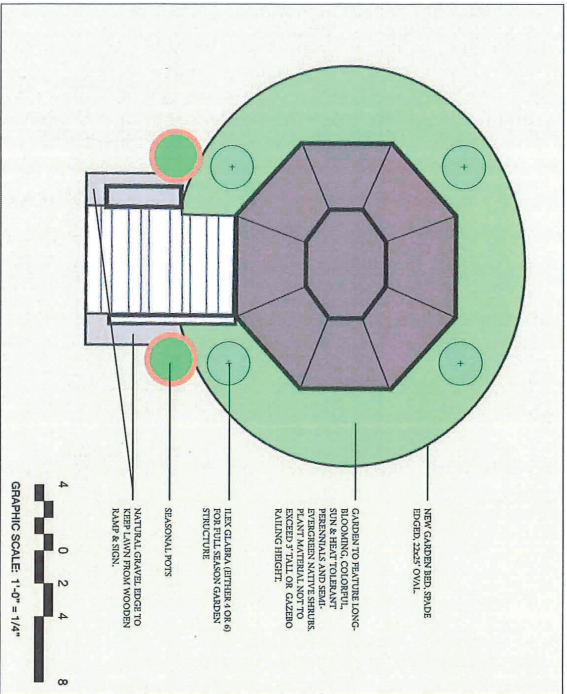
**GARDEN PALETTE**

- *Cercis canadensis*: Redbud, small understory tree, heart-shaped leaves, early magenta blossoms on bare stems, handsome branching habit, tolerates root competition.
- *Fothergilla gardenii*: Dwarf native shrub, early spring white bottlebrush blooms give way to handsome round foliage, brilliant russet fall foliage.
- *Ilex glabra 'Shamrock'*: Semi-evergreen native, neatly rounded form, dark blue berries in fall.
- *Clethra 'Hummingbird'*: Sweetly fragrant summer blooms on 3' tall/wide upright shrub, native, shade tolerant, white blossoms can continue into fall.
- *Amsinckia hubrechtii*: 2-3' soft threaded perennial, light blue flower, turns gold in fall.
- *Travella 'Pink Skyrocket'*: Native groundcover, multicolored leaf, 10" flower spikes in spring.
- *Euphemium*: Low groundcover, thrives in dry shade, russet accents, spring flowers. Zone 3.
- *Solomon Seal (Veriegte)*: Tolerates dry shade, brightens understory with lime leaves edged with cream, 18" tall, spring blooms, red accent on stem.
- *Phlox stolonifera*: (not shown) lovely native shade loving groundcover w/ tall violet blossoms in late spring, handsome tear-drop shaped mat-forming foliage from summer-winter.



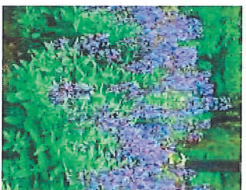


SURROUNDING SITE EX. CONDITIONS



GAZEBO GARDEN

CHESTER TOWNSCAPE  
Main Street, Chester, Vermont



- **Allium 'White Giant'**: White globe blossoms May-June, plant within summer perennials; seedheads remain ornamental to 3' tall.
- **Ilex glabra 'Shamrock'**: Native hardy semi-evergreen, small blue berries in fall and winter, compact 3' globe.
- **Miscanthus 'Little Kitten'**: Dwarf Fountain Grass: 15" tall foliage appears in June, grows to 3' with blond seed heads Sept-Dec, Zone 5, (shown with fall seedheads in lower-right)
- **Achillea 'Moonbeam'**: Pure yellow bloom from June-Sept, heat tolerant, spreads, pairs well with grasses, 24" tall, Zone 3.
- **Nepeta sibirica 'Sourvent d'André Chaudron'**: 3' upright towers of violet-blue blossoms all summer, Heat tolerant, Zone 4.
- **Sedum 'Autumn Joy'**: Reliable sun loving perennial, 18" tall, green blooms in summer turn red in fall, looks great spring-late fall.