

# CHURCH STREET SCOPING STUDY

CHESTER, VT

PROPERTY OWNER MEETING

JULY 24, 2019



# Project Study Area



- Church Street
  - From approximately Meadow Road
  - To Route 103
    - Connect to existing sidewalk on Route 103



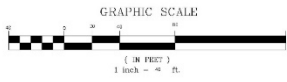
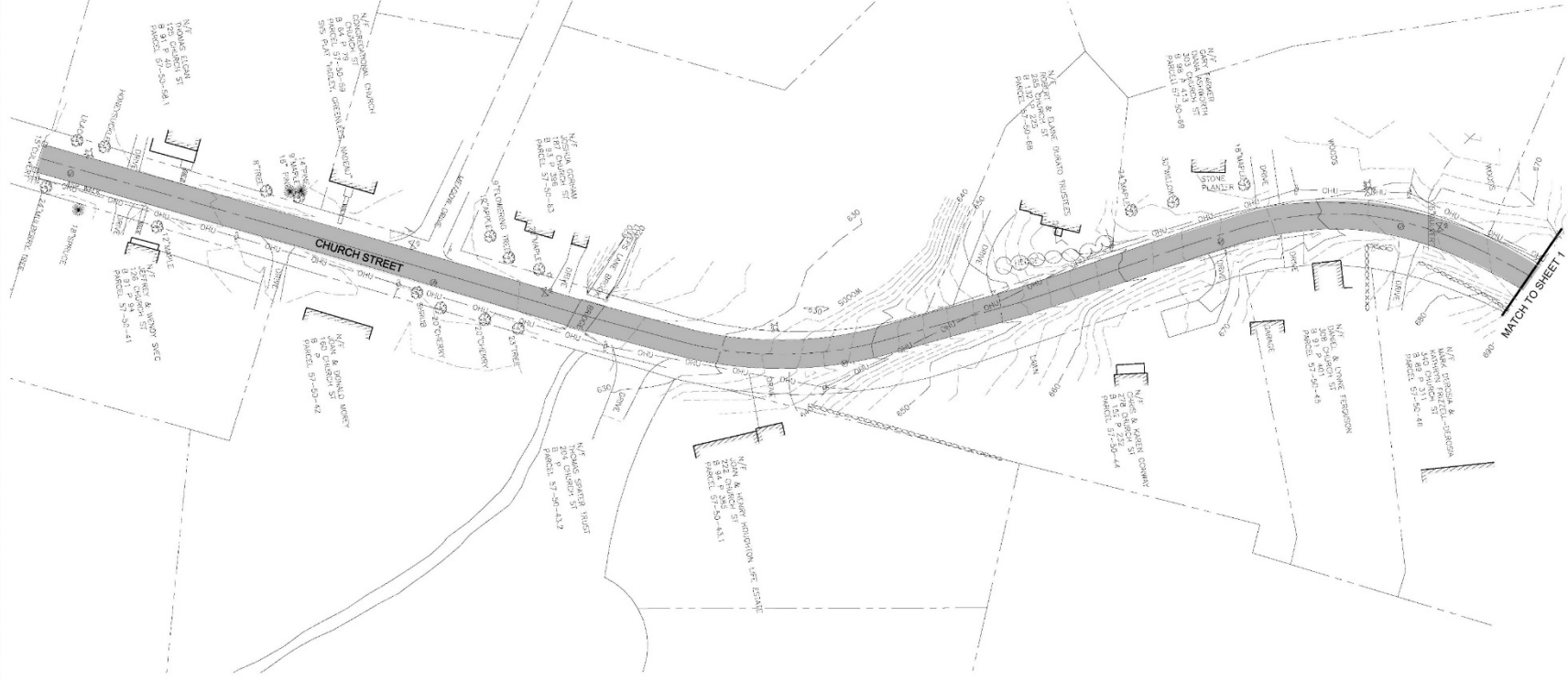
# Project Purpose & Goals

- Provide a pedestrian facility (i.e. sidewalk) to accommodate existing pedestrian traffic flow/patterns
- Improve pedestrian and vehicle safety

# Environmental Constraints



- No Wetland Impact
- Flood Plain – Possible pedestrian bridge
- No Endangered Species
- Topography
- Physical Features



**DUFRESNE GROUP**  
**CONSULTING ENGINEERS**  
 Suite 200, 59 Main Street  
 Springfield, Vermont 05156  
 E-mail: [info@dufresnegroup.com](mailto:info@dufresnegroup.com)  
 Web: [www.dufresnegroup.com](http://www.dufresnegroup.com)

Northfield, VT • Tel: (802) 874-0004 Fax: (802) 874-0913  
 St. Johnsbury, VT • Tel: (802) 478-3699 Fax: (802) 478-2881  
 Manchester, VT • Tel: (802) 748-8000 Fax: (802) 748-4212  
 Montpelier, VT • Tel: (802) 788-8201 Fax: (802) 788-8218

Dufresne Group is owned by Dufresne & Associates, P.C.

REVISIONS	
DATE	COMMENTS

CHURCH ST  
 SIDEWALK SCOPING STUDY

**EXISTING CONDITIONS**

CHESTER, VERMONT

Project # 7190003  
 Project Mgr. N.R. JOHNSON  
 Design by C.M. HASKINS  
 Drawn by K.S. MENEES  
 Reviewed by  
 Approved by N.R. JOHNSON  
 Date JULY 2019  
 Scale AS SHOWN



**DUFRESNE GROUP**  
**CONSULTING ENGINEERS**  
 Suite 200, 88 Main Street  
 Springfield, Vermont 05156  
 E-mail: info@dgroup.com  
 www: www.dgroup.com

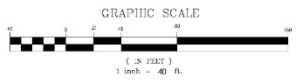
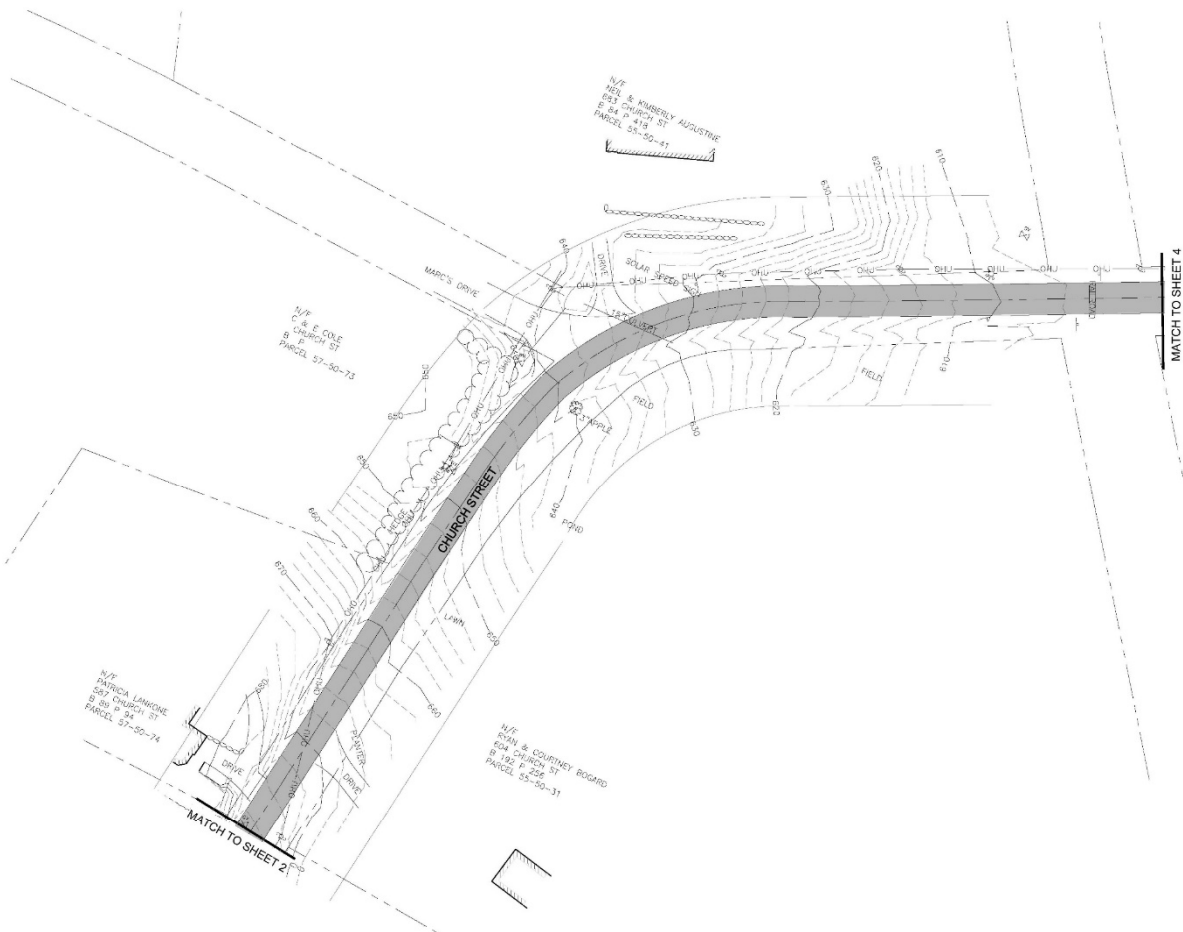
Springfield, VT - Tel: (802) 874-2004 Fax: (802) 874-2013  
 Stowe, VT - Tel: (802) 75-3666 Fax: (802) 75-2281  
 Rt. 100, Shelburne, VT - Tel: (802) 748-8000 Fax: (802) 748-4012  
 Manchester, VT - Tel: (802) 768-2251 Fax: (802) 768-4315

Dufresne Group is owned by Dufresne & Associates, PC

REVISIONS	DATE	COMMENTS	BY

CHURCH ST  
 SIDEWALK SCOPING STUDY  
**EXISTING CONDITIONS**  
 CHESTER, VERMONT

Project # 719003  
 Project Mgr N.R. JOHNSON  
 Design by C.M. HASKINS  
 Drawn by K.S. MENEES  
 Reviewed by  
 Approved by N.R. JOHNSON  
 Date JULY 2019  
 Scale AS SHOWN



**DG**  
**DUFRESNE GROUP**  
**CONSULTING ENGINEERS**  
 Suite 200, 59 Main Street  
 Springfield, Vermont 05156  
 E-mail: info@dufresnegroup.com  
 Web: www.dufresnegroup.com

Windsor, VT - Tel: (802) 874-5964 Fax: (802) 874-2013  
 Barre, VT - Tel: (802) 479-3668 Fax: (802) 479-2261  
 St. Johnsbury, VT - Tel: (802) 748-9600 Fax: (802) 748-0112  
 Montpelier, VT - Tel: (802) 785-0011 Fax: (802) 786-8518

Dufresne Group is owned by Dufresne & Associates, PC

REVISIONS	
DATE	COMMENTS

CHURCH ST  
 SIDEWALK SCOPING STUDY

**EXISTING CONDITIONS**

CHESTER, VERMONT

Project #	7190003
Project Mgr.	N.R. JOHNSON
Design by	C.M. HASKINS
Drawn by	K.S. MENEES
Reviewed by	
Approved by	N.R. JOHNSON
Date	JULY 2019
Scale	AS SHOWN

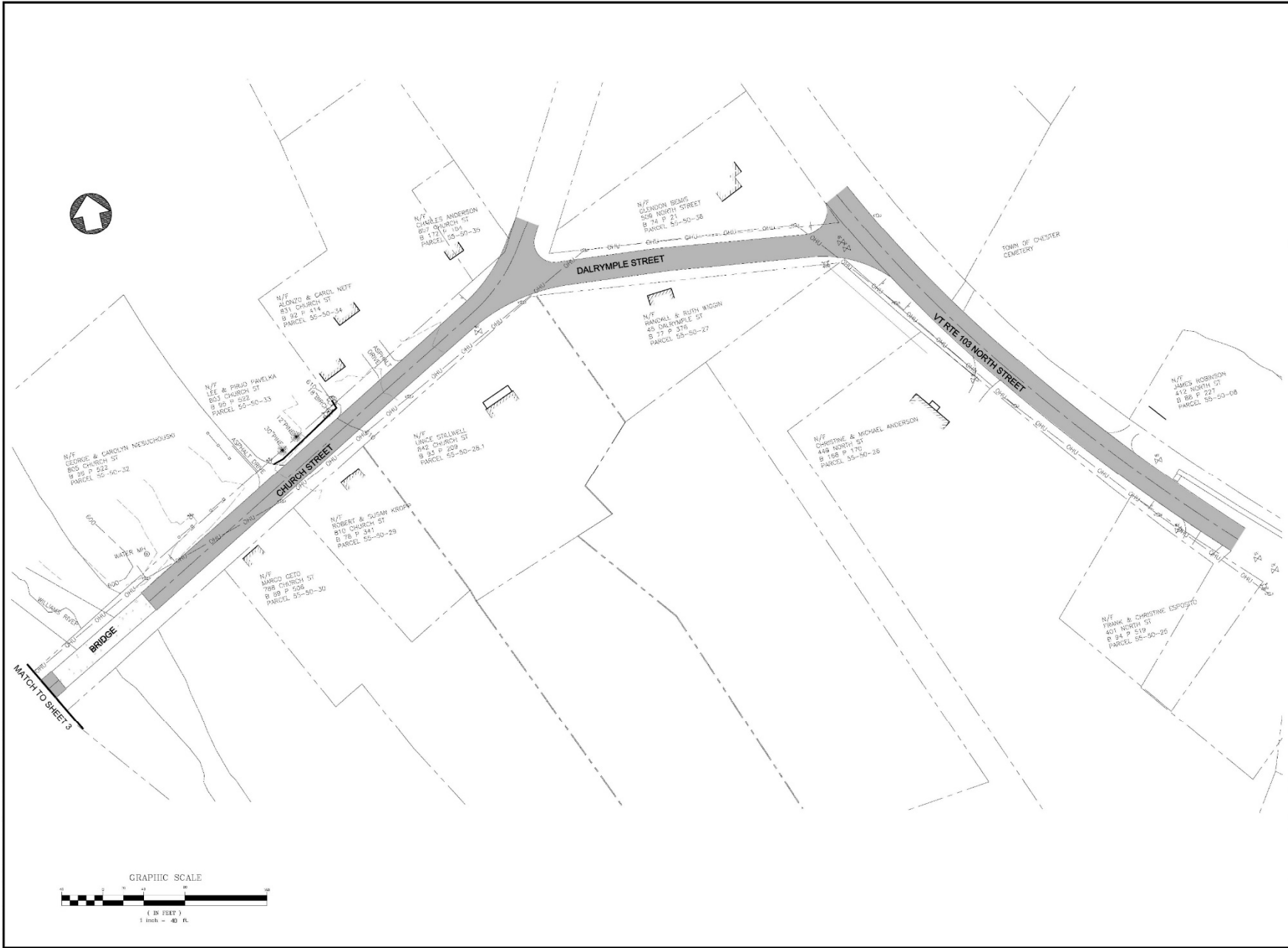
**3**

SHEET 3 OF 4



**DUFRESNE GROUP**  
**CONSULTING ENGINEERS**  
 Suite 200, 58 Main Street  
 Springfield, Vermont 05156  
 e-mail: info@dufresnegroup.com  
 web: www.dufresnegroup.com

Springfield, VT - Tel: (802) 876-2004 Fax: (802) 876-2013  
 Barre, VT - Tel: (802) 739-9288 Fax: (802) 739-2281  
 St. Albans, VT - Tel: (802) 748-8800 Fax: (802) 748-4212  
 Montpelier, VT - Tel: (802) 763-0001 Fax: (802) 763-0018  
 Dufresne Group is owned by Dufresne & Associates, P.C.



REVISIONS	DATE	COMMENTS	BY

CHURCH ST  
 SIDEWALK SCOPING STUDY

**EXISTING CONDITIONS**

CHESTER, VERMONT

Project #	7190003
Project Mgr	N.R. JOHNSON
Design by	C.M. HASKINS
Drawn by	K.S. MENEES
Reviewed by	
Approved by	N.R. JOHNSON
Date	JULY 2019
Scale	AS SHOWN



# What to Expect?

- Attend the Fall 2019 Meeting for an Alternatives Presentation
  - Potential alignments/locations have not yet been developed. This will be done in the Alternatives Phase
- No Construction for Several Years
- Public Input is Vital! Your Opinion Matters!



# Next Steps

- Alternative Development
- Evaluation of Alternatives
- Alternatives Presentation – Fall 2019
- Selection of Preferred Alternative
- Public Informational Meeting – Winter 2020



# Local Input

Concerns / Comments / Questions ??

Please take a few minutes to complete the online survey!

<https://www.surveymonkey.com/r/77CJT2L>

Thank You!